

SECTION EDITOR: GRACE S. ROZYCKI, MD

Image of the Month

Rabih M. Salloum, MD; Leonidas Koniaris, MD

A 75-YEAR-OLD MAN WITH A HISTORY OF TYPE 2 diabetes mellitus, hypertension, and depression sought care at the emergency department with a 5-day history of generalized itching and malaise. At physical examination, the patient was slightly anxious but in no acute distress; his sclera were icteric, and his abdomen was soft, with slight fullness in the right upper quadrant but no discrete masses or tenderness. Laboratory test

results demonstrated a white blood cell count of 13 500 cells per microliter ($13.5 \times 10^9/L$) but his electrolyte level was normal. His total serum bilirubin level was 19.5 mg/dL ($333.45 \mu\text{mol/L}$), and he had an alkaline phosphatase level of 917 IU/L. A computed tomographic (CT) scan of the abdomen was obtained (**Figure 1**).

What Is the Diagnosis?

- A. Complex cystic neoplasm
- B. Unusual duplication cysts
- C. Periapillary tumor
- D. Mirizzi syndrome

From the Department of Surgery, University of Rochester School of Medicine, Rochester, NY.

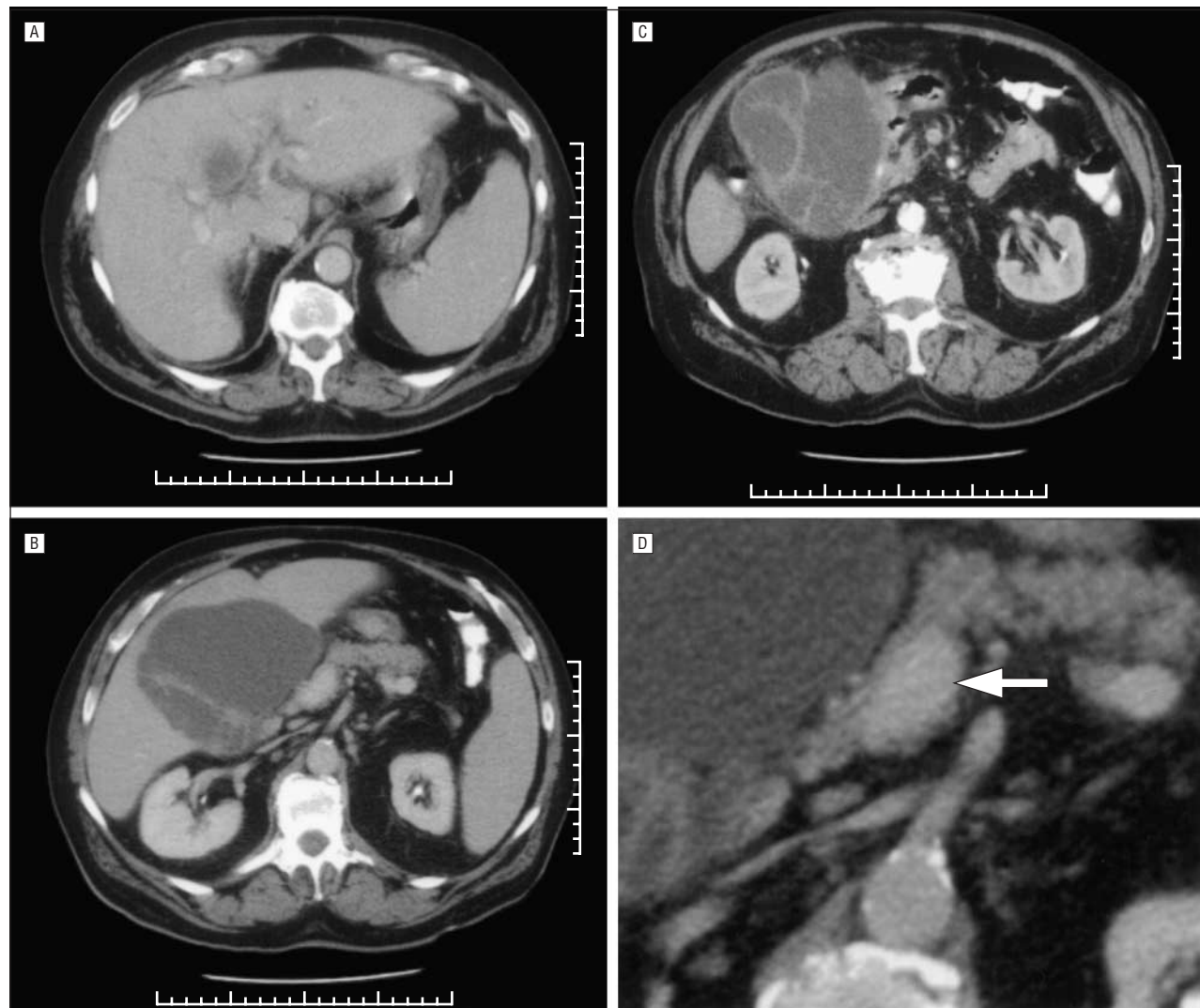


Figure 1.