

Image of the Month

Mustafa Hasbahceci, MD; Cengiz Erol, MD; Mehmet Seker, MD

A 54-YEAR-OLD WOMAN PRESENTED WITH a palpable stringlike lesion on her right breast for the past week. Her medical history was unremarkable for any disease. On physical examination, a tubular lesion was detected on the lower inner quadrant of the right breast tracing through the upper right quadrant of the abdomen, with discomfort on palpation.

Author Affiliations: Istanbul 29 May Hospital, Fatih, Istanbul, Turkey.

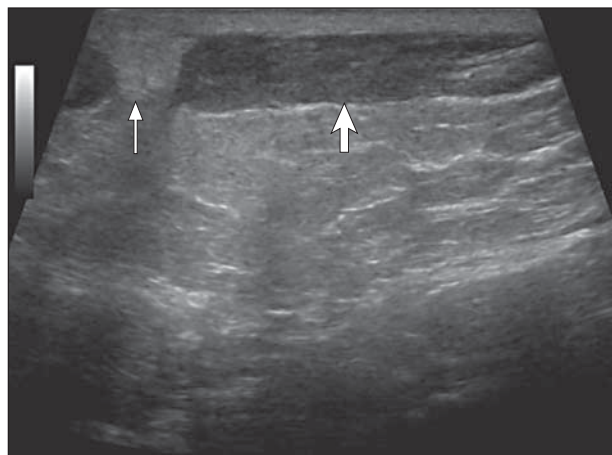


Figure 1. Markedly dilated venous structures (thick white arrow) with intraluminal echogenic thrombus (thin white arrow) consistent with superficial thrombophlebitis.

Ultrasonographic evaluation revealed dilated venous structures with intraluminal echogenic thrombus (**Figure 1**) and lack of flow on color Doppler in these tubular structures. On mammographic examination, long linear densities were found in the lower inner quadrant of the right breast (**Figure 2**).

What Is the Diagnosis?

- A. Lymphangiectasia
- B. Mondor disease
- C. Granulomatous mastitis
- D. Diabetic mastopathy

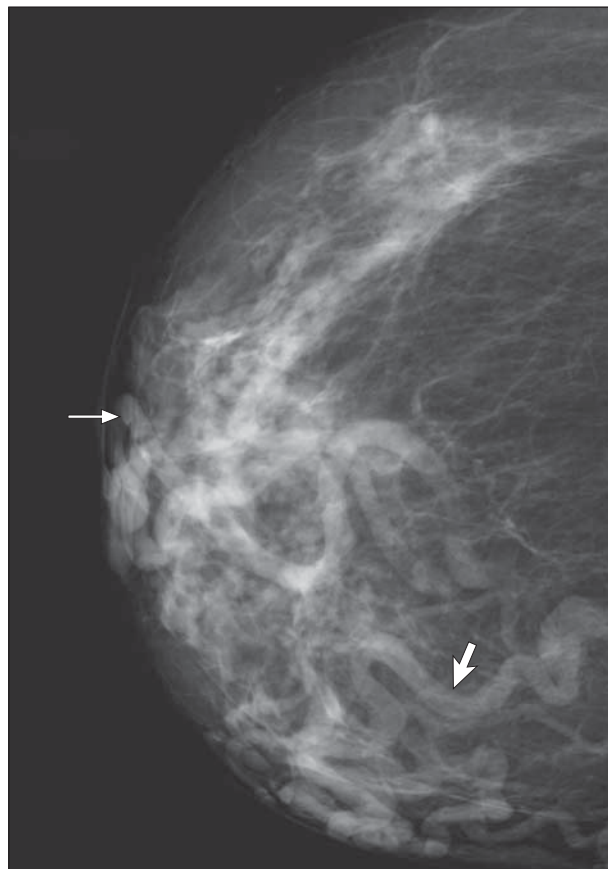


Figure 2. Right craniocaudal view shows long linear densities (thick and thin white arrows) predominantly in the lower inner quadrant of the right breast.